



Magswitch Technology, Inc.
 1355 Horizon Ave
 Lafayette, CO 80026
 Magswitch.com.au
 303-468-0662

Magswitch 600 Amp Finned Magnetic Ground Clamp

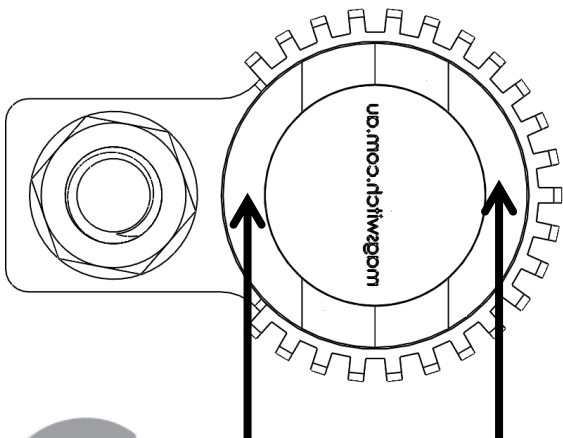
P/N: 8100747

The Magswitch Finned Magnetic Ground Clamps let welders quickly set up, weld and move on to the next job. Simply place it on a clean work surface, turn it on and start welding. Instant ground on a flat surface or a pipe. The finned design lowers the temperature of the unit by almost 27%.



WARNING!
 Do Not Operate Unless In
 Contact With Ferrous Target

SPECIFICATIONS	
P/N: 8100747 - MAGSWITCH 600 Amp Finned Magnetic Ground Clamp	
Magnet Strength	200 lbs/ 89 kg
Net Weight	1.8 lbs/ 0.8 kg
Overall Height	4.0 in/ (103.0 mm)
Magnetic Pole Footprint	69 mm diameter



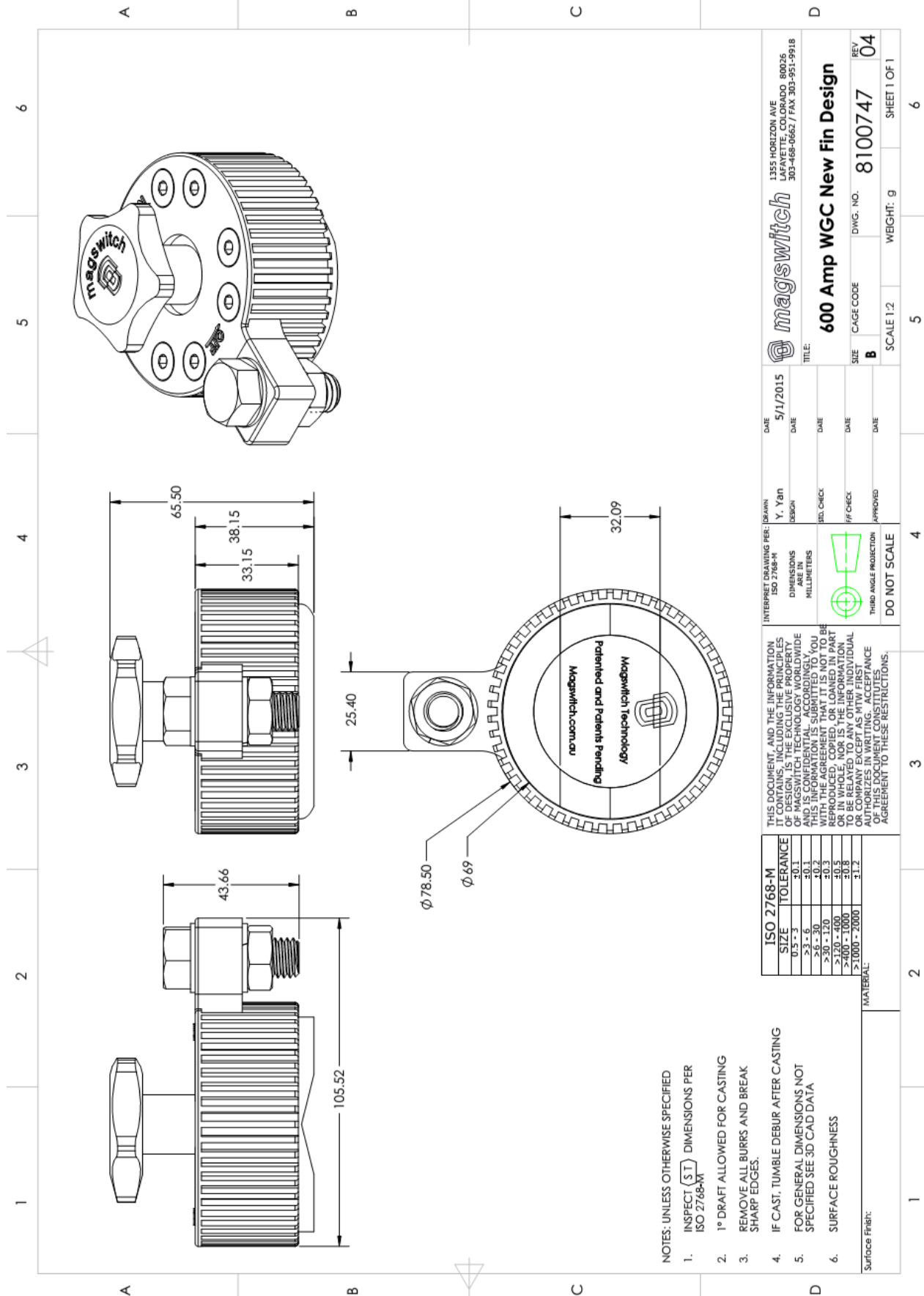
WORKING SURFACE



Revision Date: May 1, 2015



Part Number 1101143
Revision Date: May 1, 2015



- NOTES: UNLESS OTHERWISE SPECIFIED
- INSPECT (ST) DIMENSIONS PER ISO 2768-M
 - 1° DRAFT ALLOWED FOR CASTING
 - REMOVE ALL BURRS AND BREAK SHARP EDGES.
 - IF CAST, TUMBLE DEBUR AFTER CASTING
 - FOR GENERAL DIMENSIONS NOT SPECIFIED SEE 3D CAD DATA
 - SURFACE ROUGHNESS

ISO 2768-M	SIZE	TOLERANCE
	0.5 - 3	±0.1
	>3 - 6	±0.1
	>6 - 30	±0.2
	>30 - 100	±0.3
	>100 - 400	±0.5
	>400 - 1000	±0.8
	>1000 - 2000	±1.2

Surface Finish: MATERIAL:

THIS DOCUMENT, AND THE INFORMATION CONTAINED THEREIN, IS THE EXCLUSIVE PROPERTY OF MAGSWITCH TECHNOLOGY WORLDWIDE AND IS CONFIDENTIAL. ACCORDINGLY, YOU SHALL NOT REPRODUCE, COPIED, OR LOANED IN PART OR IN WHOLE, NOR IS THE INFORMATION TO BE DISCLOSED TO ANY INDIVIDUAL OR COMPANY EXCEPT AS MTW FIRST AUTHORIZES IN WRITING. ACCEPTANCE OF THIS DOCUMENT CONSTITUTES AGREEMENT TO THESE RESTRICTIONS.

INTERPRET DRAWING PER: ISO 2768-M DIMENSIONS ARE IN MILLIMETERS
THIRD ANGLE PROJECTION
DO NOT SCALE

DATE	5/1/2015	DESIGN	Y. Yan
DATE		REV. CHECK	
DATE		FF CHECK	
DATE		APPROVED	
TITLE:		1355 HORIZON AVE LAFAYETTE, COLORADO 80026 303-468-0662 / FAX 303-951-9918	
SIZE		B	
CAGE CODE		8100747	
SCALE		1:2	
WEIGHT		g	
SHEET 1 OF 1		6	