



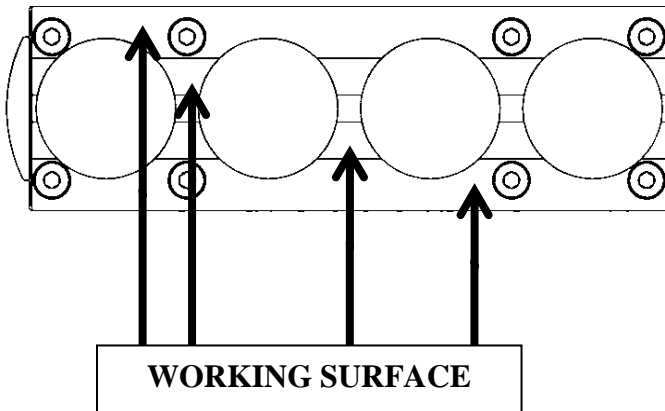
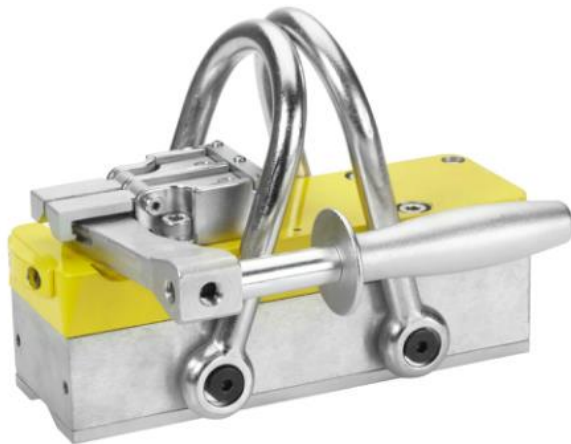
Magswitch Technology, Inc.
 8774 Yates Dr. Suite 140
 Westminster, CO 80031
 Magswitch.com.au
 303-468-0662

Magswitch MLAY600x4

P/N: 8100364

Magswitch LAY series magnets utilize different size magnets to attain different field depths. This allows for greater working loads and increased control over larger work pieces. The MLAY600x4 is a lightweight heavy lifting magnet ideal for lifting thin sheet, beams and pipe. It features a unique dual swivel hook design for both load stability and lifting from horizontal to vertical. With customizable pole shoes to fit almost any application, the LAY is a great all around tool that is perfect for picking pipe and round as well as large plate steel.

WARNING!
Do Not Operate Unless In
Contact With Ferrous Target



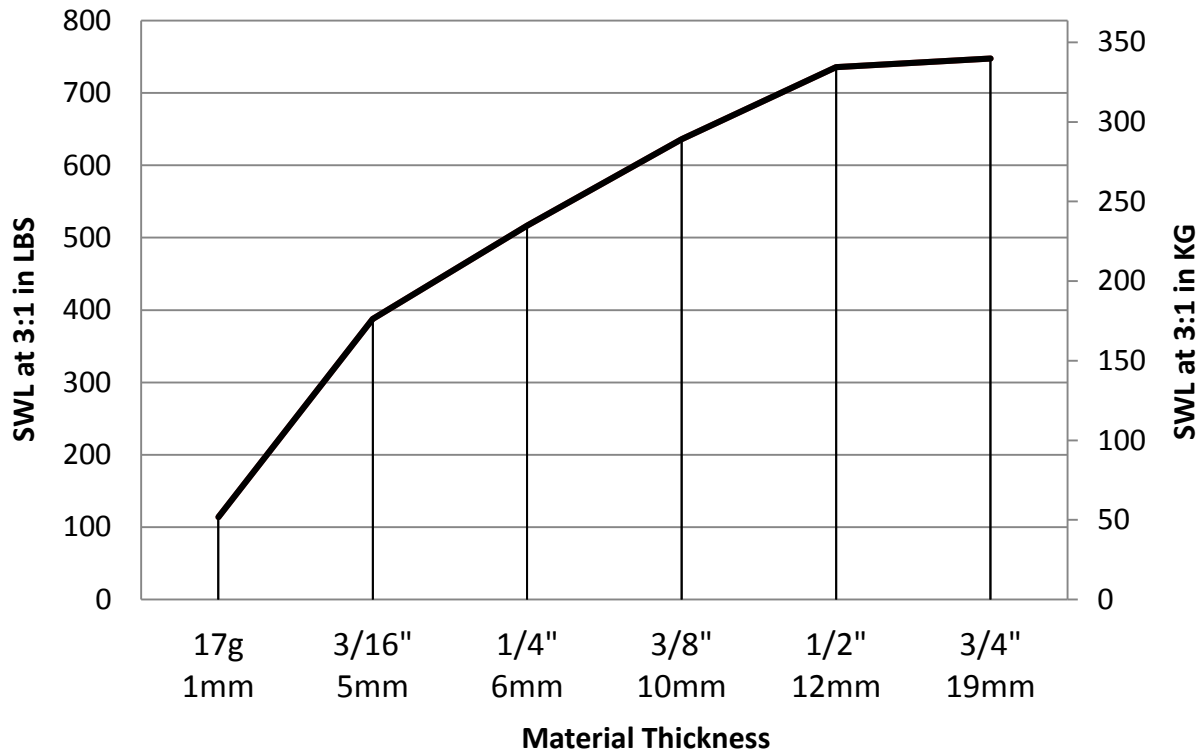
SPECIFICATIONS	
P/N: 8100364 - MAGSWITCH MLAY600x4	
Max Breakaway*	2285 lbs/1036 kg
Safe Working Load*	762 lbs/346 kg
Full Saturation Thickness	1/2" / 9.5mm
Max Safe Shear*	330 lbs/150 kg
Minimum Thickness for De-Stack	1/2" / 9.5mm
Net Weight	17.9 lbs/8.1 kg
Mounting Thread	M6x1.0
Overall Height	166.47 mm
Magnetic Pole Footprint	223x71.12 mm



Part Number 110691
 Revision Date: June 25, 2012

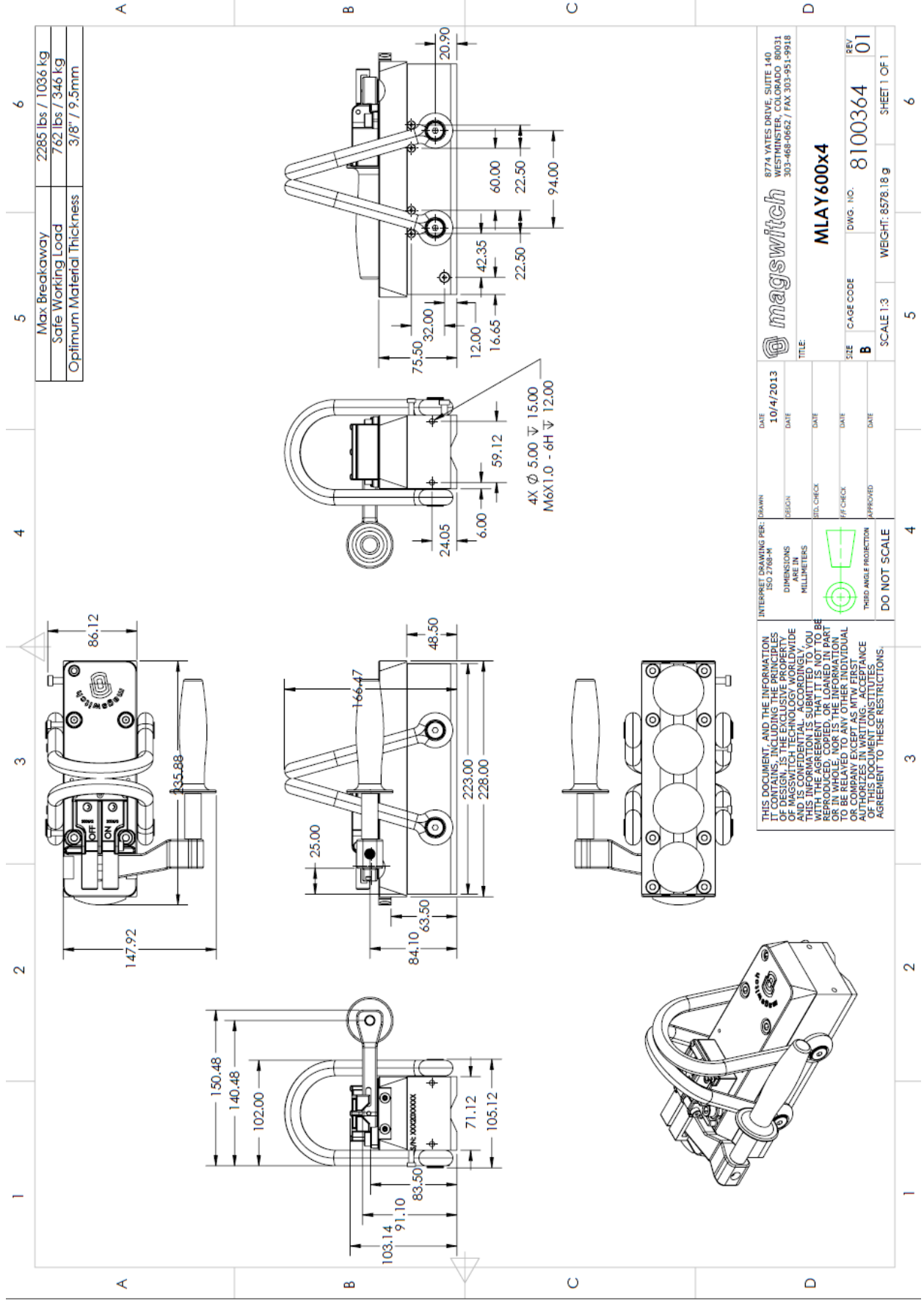
* Max Breakaway determined in laboratory environment on 2" thick SAE1018 Steel with surface roughness 63 micro inches. Many factors contribute to the actual breakaway force in each application. Always test the magswitch in each application before deployment. Refer to the magswitch information booklet for more information.

Magswitch MLAY600x4 Safe Working Load



Part Number 110691
Revision Date: June 25, 2012

* Max Breakaway determined in laboratory environment on 2" thick SAE1018 Steel with surface roughness 63 micro inches. Many factors contribute to the actual breakaway force in each application. Always test the magswitch in each application before deployment. Refer to the magswitch information booklet for more information.



Part Number 110691
 Revision Date: June 25, 2012