



Magswitch Technology, Inc.  
 8774 Yates Dr. Suite 140  
 Westminster, CO 80031  
 Magswitch.com.au  
 303-468-0662

# Magswitch Mini Multi Angle w/ 300 Amp Ground

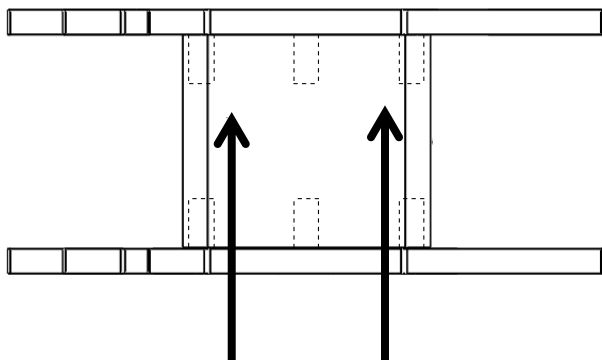
## P/N: 8100351

The Magswitch line of Mini Multi Angle workholding magnets offer you more angles in one product than any other magnetic angles. If you're tired of Mini angle magnets that claim they shut off, but really don't, then you'll love Magswitch. Magswitch Mini angles are hassle free. They stay clean for years of use. Once you use Magswitch Mini Angles, you will never settle for anything less!



**WARNING!**  
 Do Not Operate Unless In  
 Contact With Ferrous Target

SPECIFICATIONS	
<b>P/N: 8100351 - MAGSWITCH Mini Multi Angle w/ 300 Amp Ground</b>	
Max Breakaway*	150 lbs/67 kg
Full Saturation Thickness	11 g / 3.05 mm
2:1 Shear Working Load*	6 lbs / 2.7 kg
Net Weight	0.9 lbs/0.4 kg
Overall Height	87 mm
Magnetic Pole Footprint	90.5 mm x 44 mm



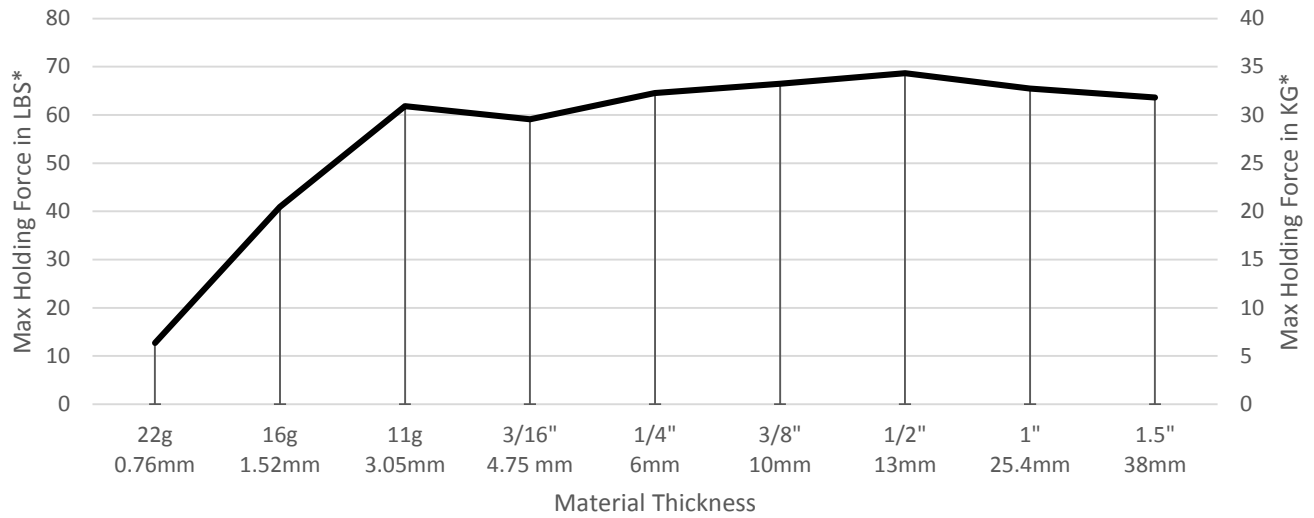
**WORKING SURFACE**



Part Number 110692  
 Revision Date: June 26, 2012

\* Max Breakaway determined in laboratory environment on 2" thick SAE1018 Steel with surface roughness 63 micro inches. Many factors contribute to the actual breakaway force in each application. Always test the magswitch in each application before deployment. Refer to the magswitch information booklet for more information.

### Magswitch Mini Multi Angle w/ 300 Amp Ground Clamp Breakaway Data vs. Thickness

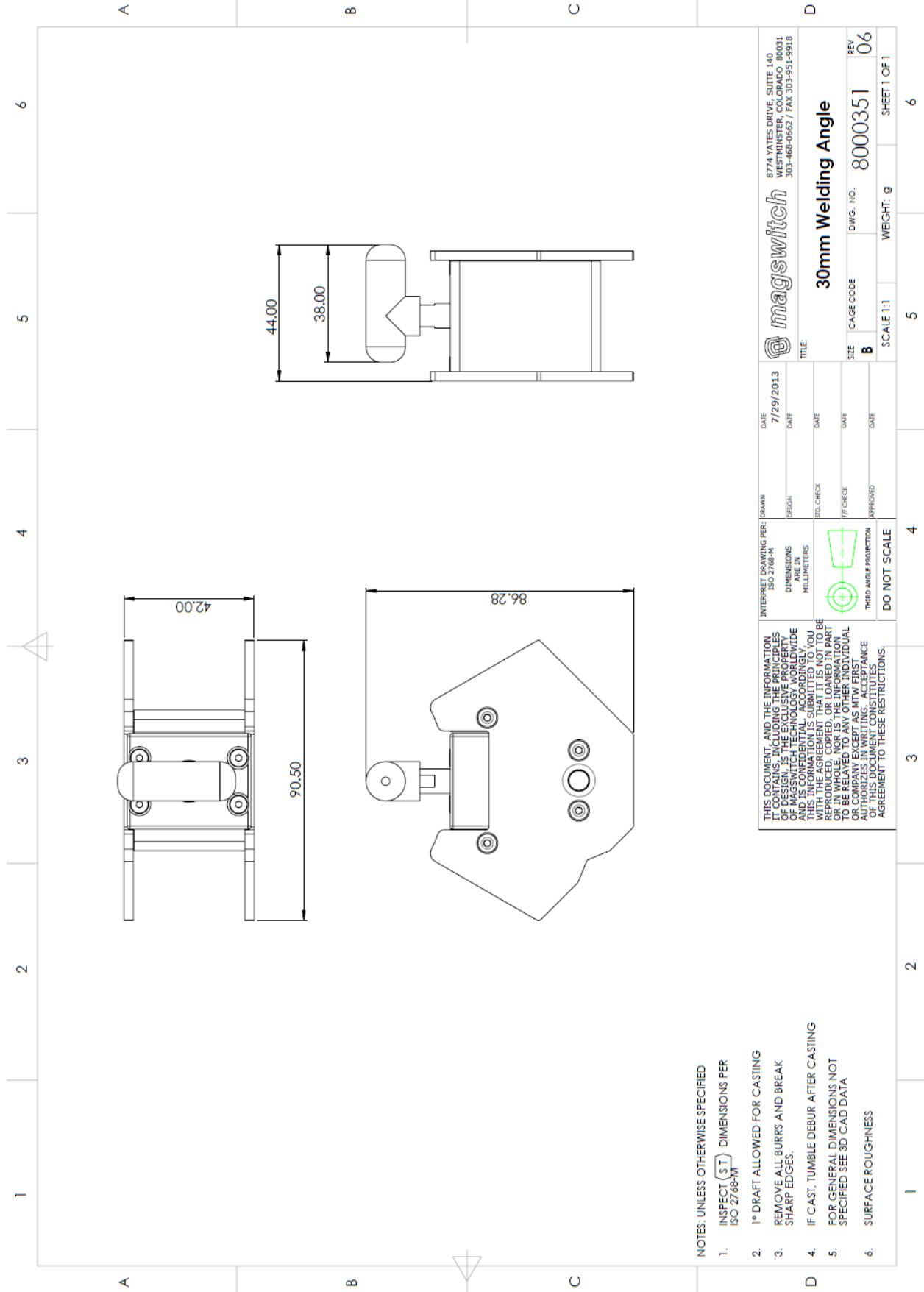


Part Number 110692  
Revision Date: June 26, 2012

\* Max Breakaway determined in laboratory environment on 2" thick SAE1018 Steel with surface roughness 63 micro inches. Many factors contribute to the actual breakaway force in each application. Always test the magswitch in each application before deployment. Refer to the magswitch information booklet for more information.



Part Number 110692  
 Revision Date: June 26, 2012



NOTES: UNLESS OTHERWISE SPECIFIED

1. INSPECT (S T) DIMENSIONS PER ISO 2768-MT
2. 1° DRAFT ALLOWED FOR CASTING
3. REMOVE ALL BURRS AND BREAK SHARP EDGES.
4. IF CAST, TUMBLE DEBUR AFTER CASTING
5. FOR GENERAL DIMENSIONS NOT SPECIFIED SEE 3D CAD DATA
6. SURFACE ROUGHNESS

INTERPRET DRAWING PER: ISO 2768-MT DIMENSIONS IN MILLIMETERS THIRD ANGLE PROJECTION DO NOT SCALE		DRAWN: _____ DESIGN: _____ STD. CHECK: _____ P/F CHECK: _____ APPROVED: _____	DATE: 7/29/2013 DATE: _____ DATE: _____ DATE: _____ DATE: _____		8774 YATES DRIVE, SUITE 140 WESTMINSTER, COLORADO 80031 303-468-0662 / FAX 303-951-9918
THIS DOCUMENT, AND THE INFORMATION IT CONTAINS, INCLUDING THE PRINCIPLES AND IS CONFIDENTIAL, ACCORDINGLY, YOU AND IS CONFIDENTIAL. ACCORDINGLY, YOU THIS INFORMATION IS SUBMITTED TO YOU REPRODUCED, COPIED, OR LOANED IN PART OR IN WHOLE, NOR IS THE INFORMATION TO BE RELATED TO ANY OTHER INDIVIDUAL OR ENTITY. YOUR SIGNATURE AND TITLE AUTHORIZES IN WRITING, ACCEPTANCE OF THIS DOCUMENT CONSTITUTES AGREEMENT TO THESE RESTRICTIONS.			TITLE:	30mm Welding Angle	REV: 06
WEIGHT: g		CAGE CODE: B	DWG. NO.: 8000351	SCALE: 1:1	SHEET 1 OF 1